

K8



SUPAPANEL®



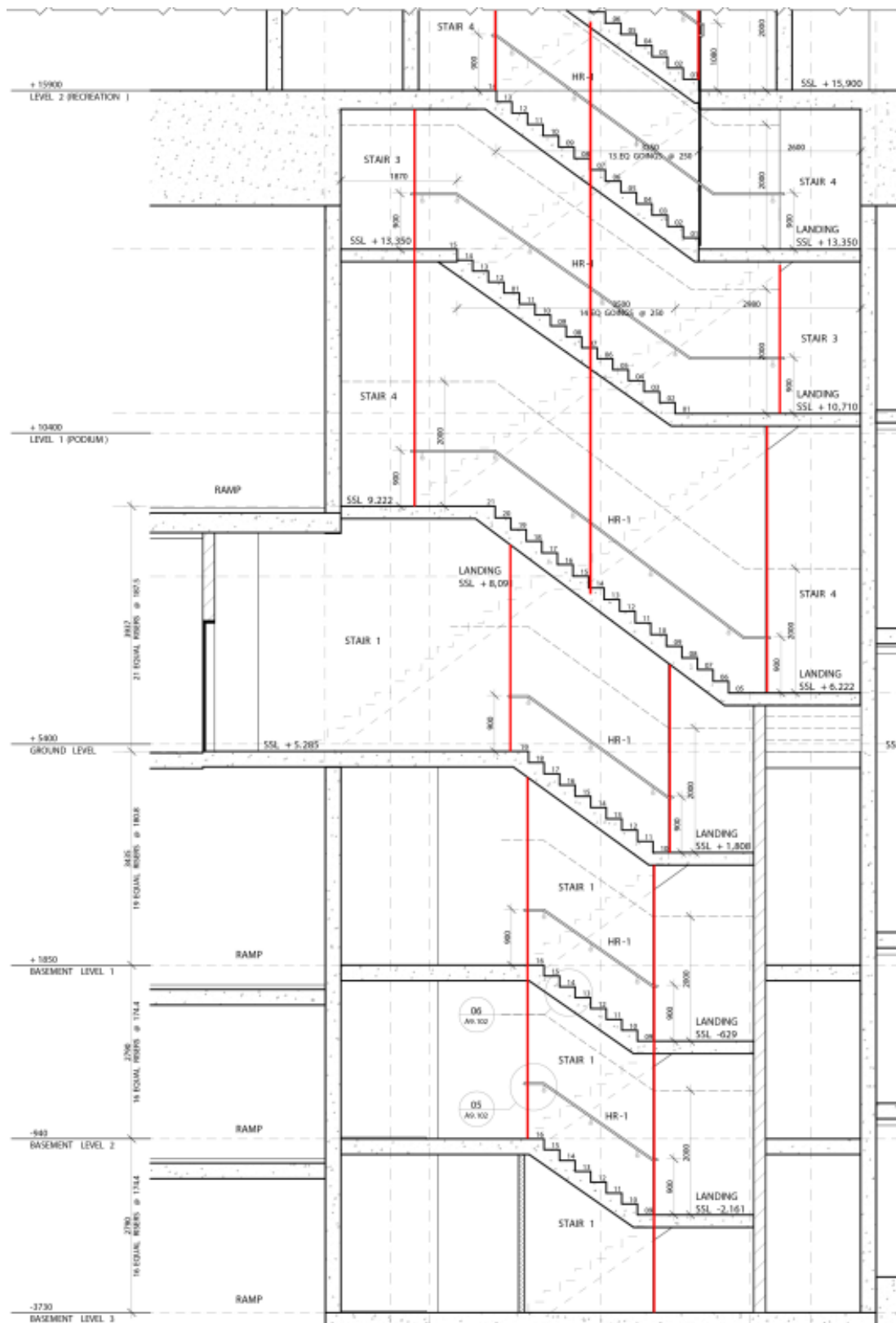
Stair Systems



the next generation of aerated panels



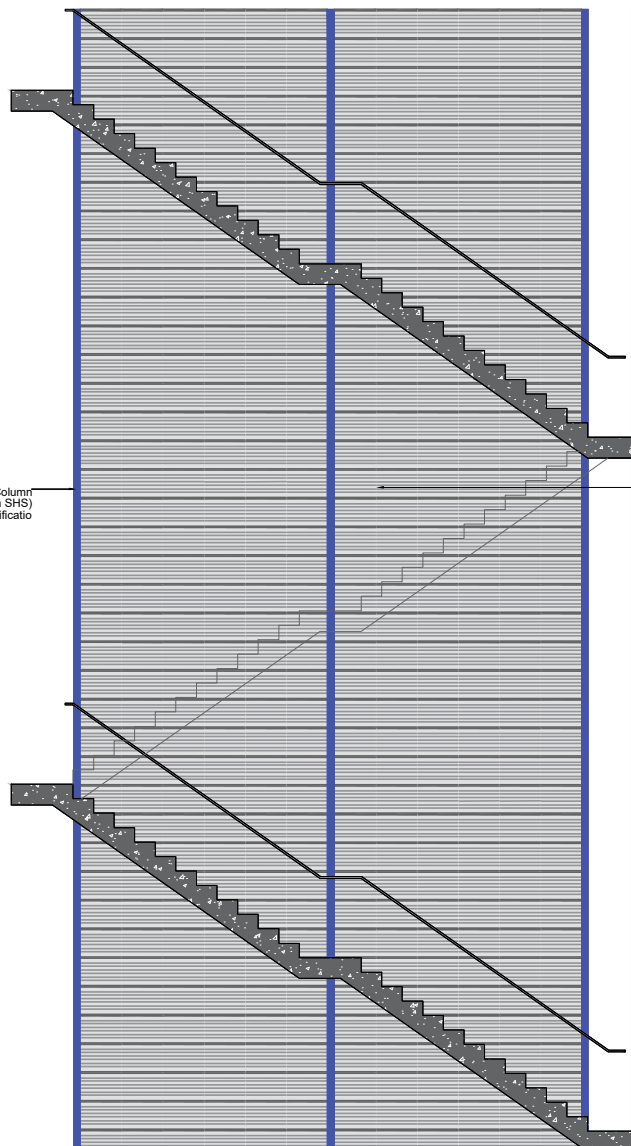
3.0 TYPICAL DOUBLE STAIR EXAMPLE



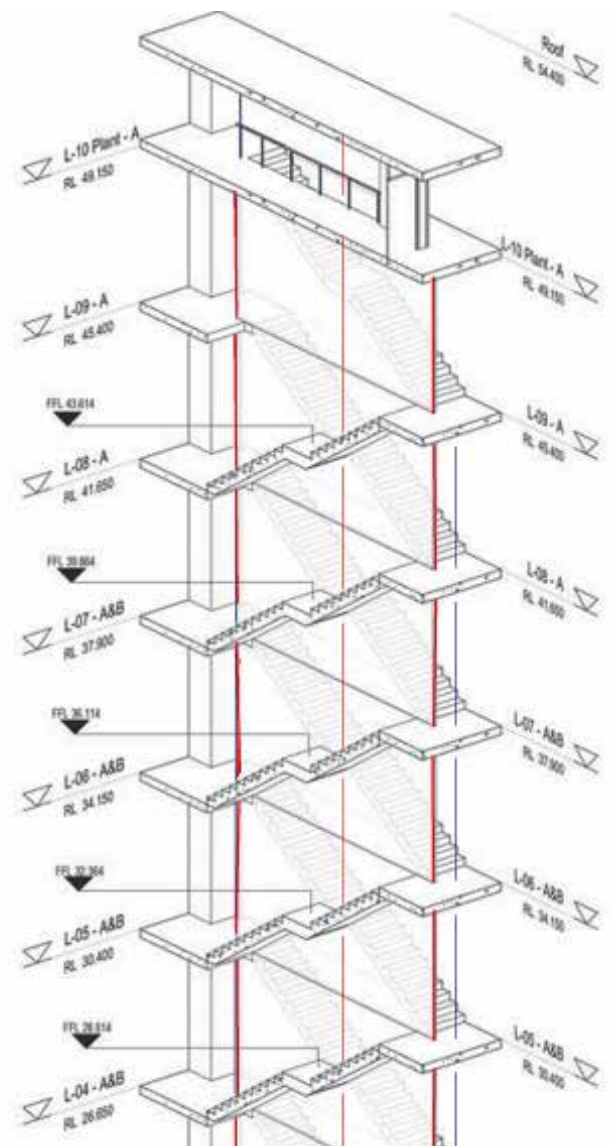
NOTES:

- Maximum vertical column height is 4.8m. If longer spans are required, a job specific engineer will need to be engaged.
 - This design assumes the stair engineering takes into account the weight of columns and stair concrete is minimum 32mp's.
 - Columns have been designed for lateral wind load of 250Pa's. If columns are to be designed larger than this job, a specific engineer will need to be engaged.
 - The gap between stair landings at the column connection points is assumed to be maximum 85mm. If greater than this, a job specific engineer will need to be engaged.
 - If other site conditions vary from those specified on these plans, a job specific engineer will need to be engaged.
- * RED LINE INDICATES THE ADDED POST
- * RHS 35 X 65 X 4mm.

3.1 TYPICAL SINGLE STAIR OPTION



Supporting Column
(Recommended 35 * 65 * 4mm SHS)
Please refer to Engineers for further clarification



* BLUE LINE INDICATES THE ADDED COLUMN.

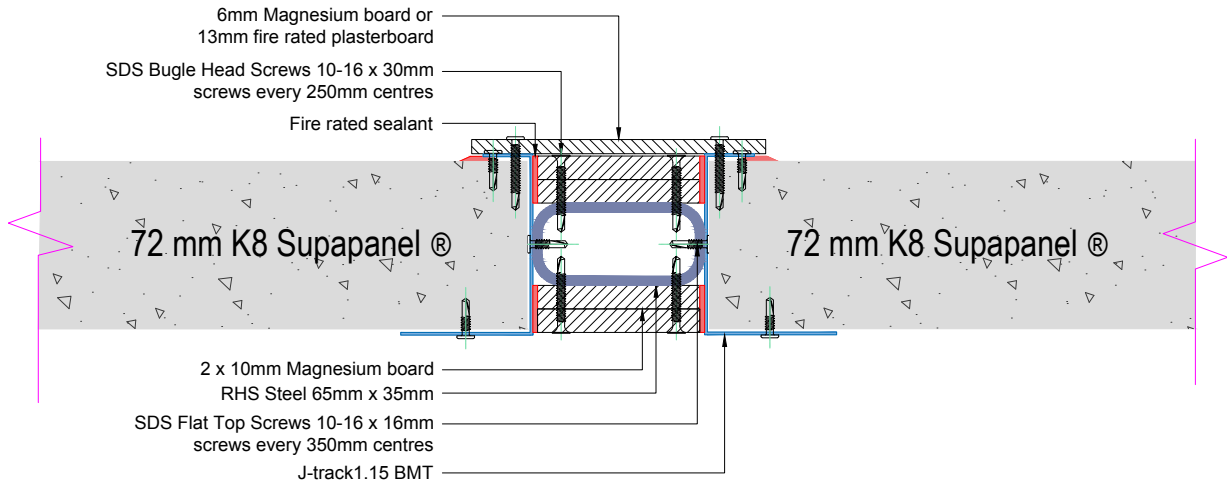
- Recommended SHS 65 x 45 x 4mm.
- The gaps between the wall & the stair could easily be sealed and covered (No additional structural angles or others required).
- If other site conditions vary from those specified on these plans, a job specific engineer will need to be engaged.

* RED LINE INDICATES THE ADDED COLUMN.

- Currently maximum span between columns have been assigned at 6.5m.

3.2 FIRE SHIELDING ON POSTS

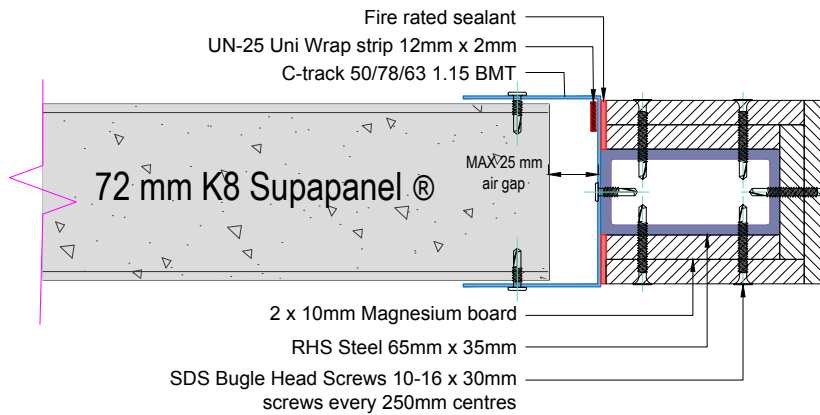
CENTRE POST



3.3 FIRE SHIELDING ON POSTS

END POST C-TRACK

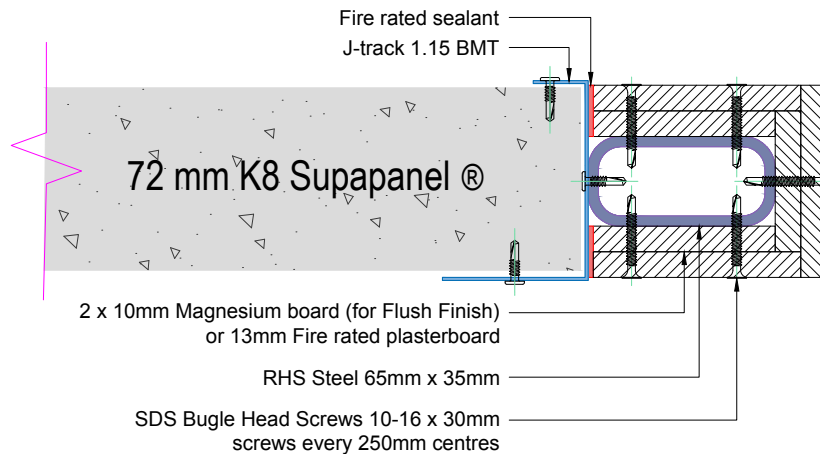
** 25 MM GAP IN THE TOP TRACK **



3.4 FIRE SHIELDING ON POSTS

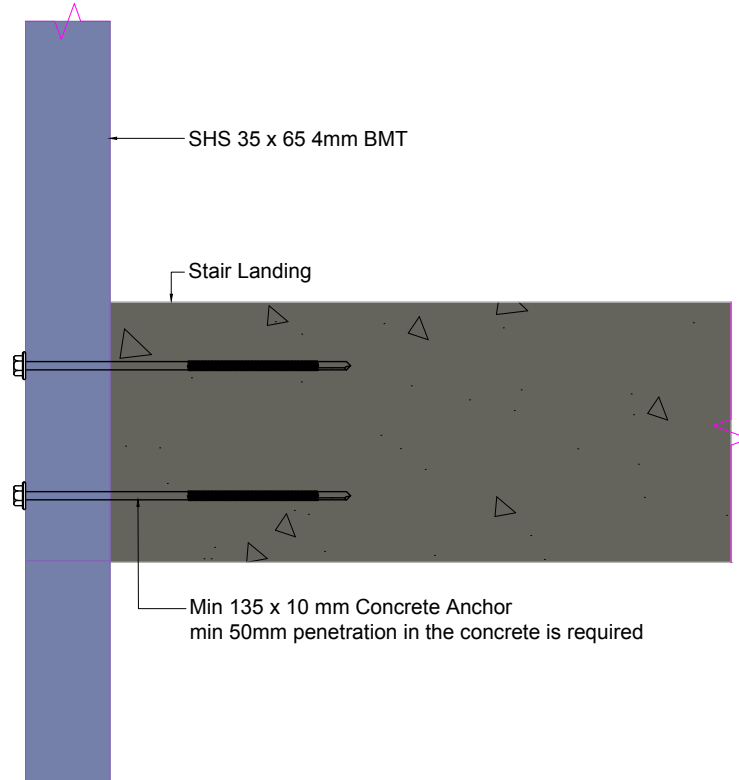
END POST J-TRACK

** J TRACK IS FULLY ENGAGED **

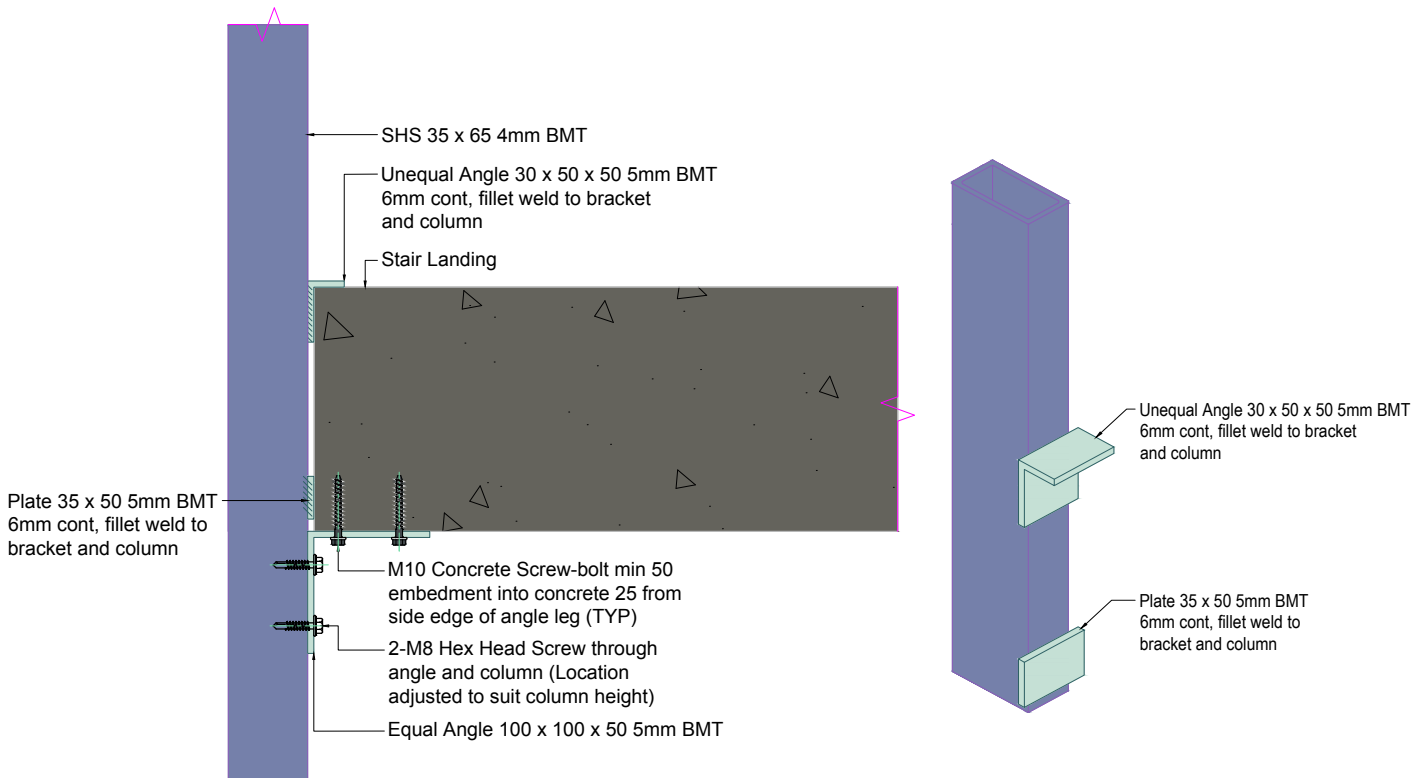


3.5 JUNCTION DETAILS - POST SUSPENDED OFF LANDING

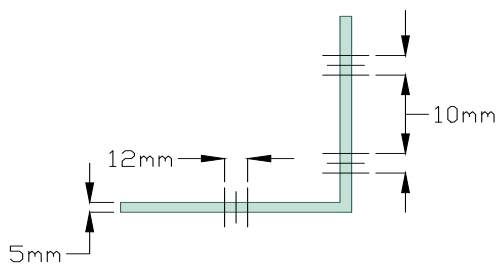
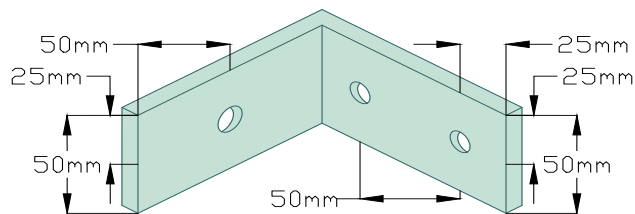
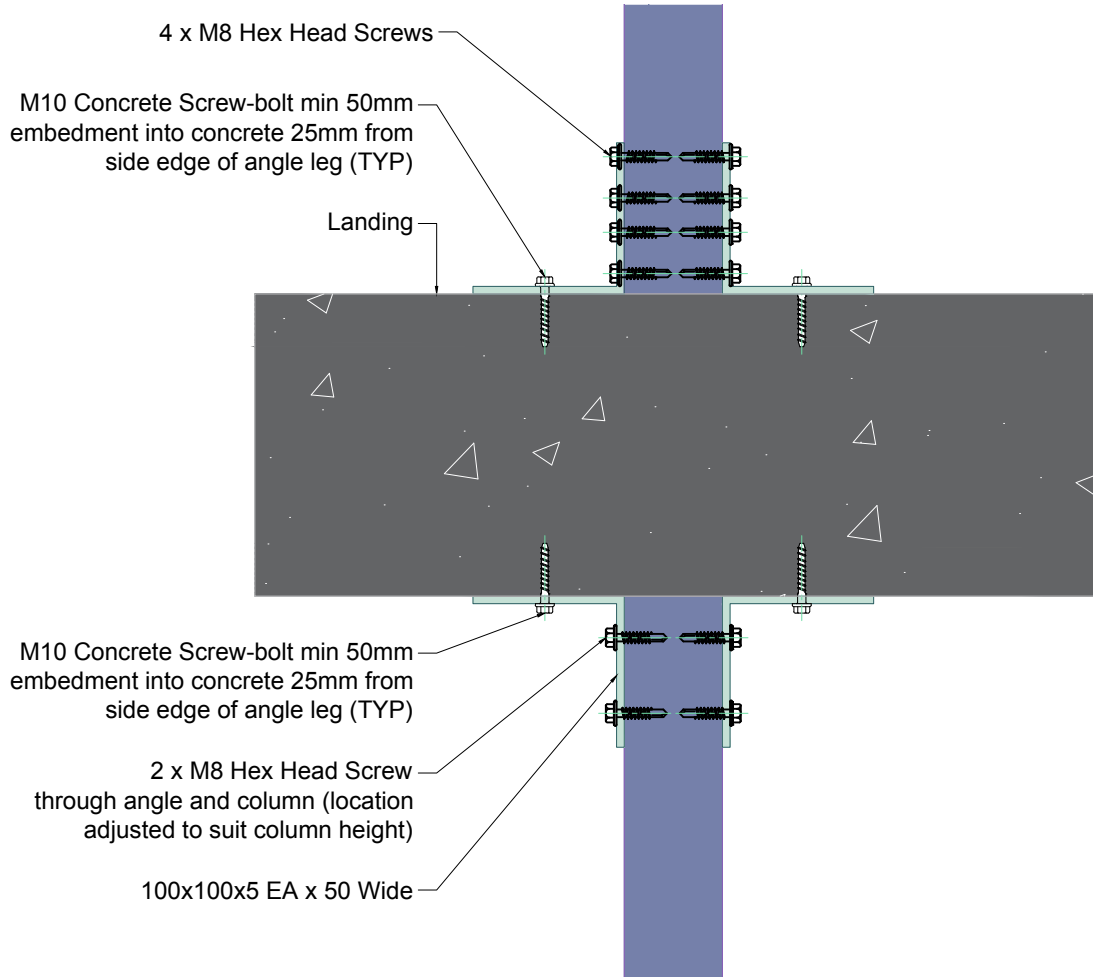
Option 1



Option 2

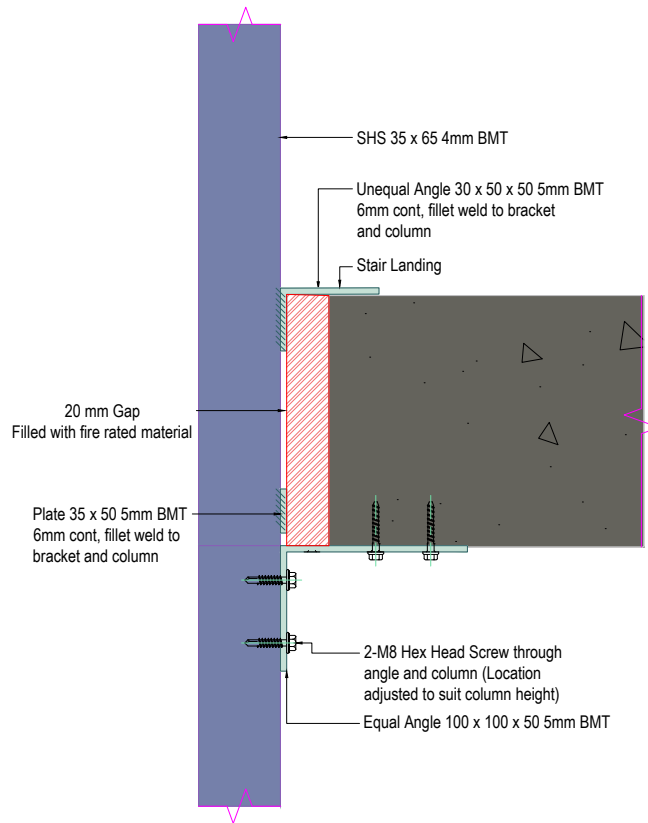


3.6 JUNCTION DETAILS - POST SUSPENDED ON LANDING

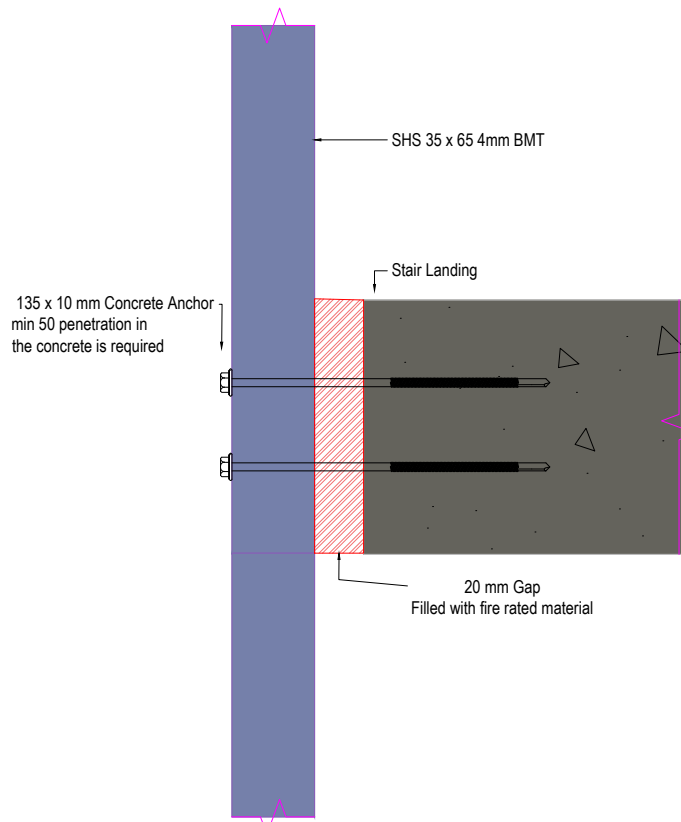


3.7 RECESS POST SUSPENDED OFF LANDINGS

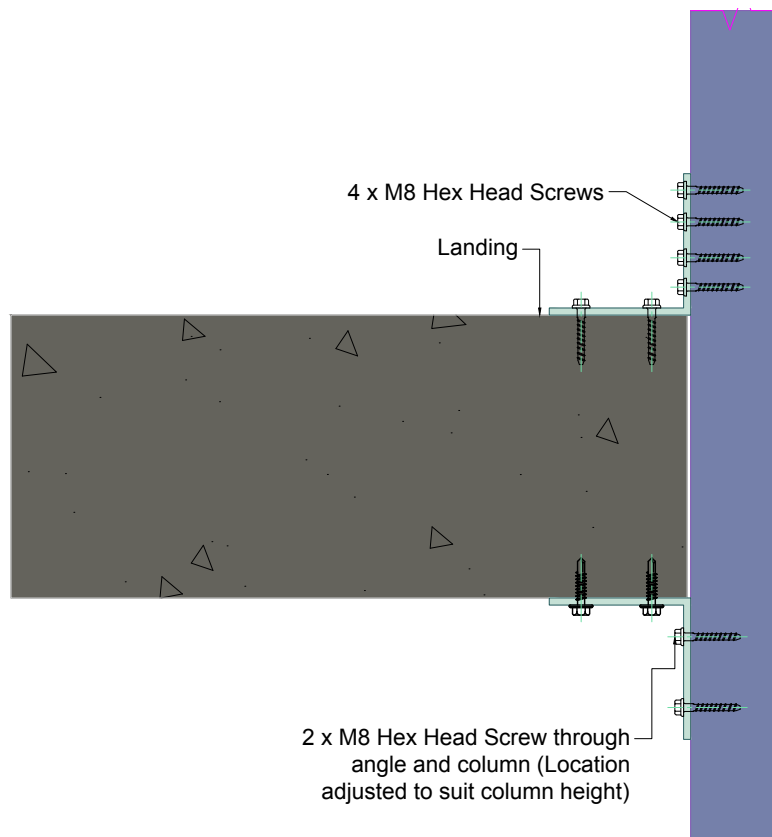
Option 1



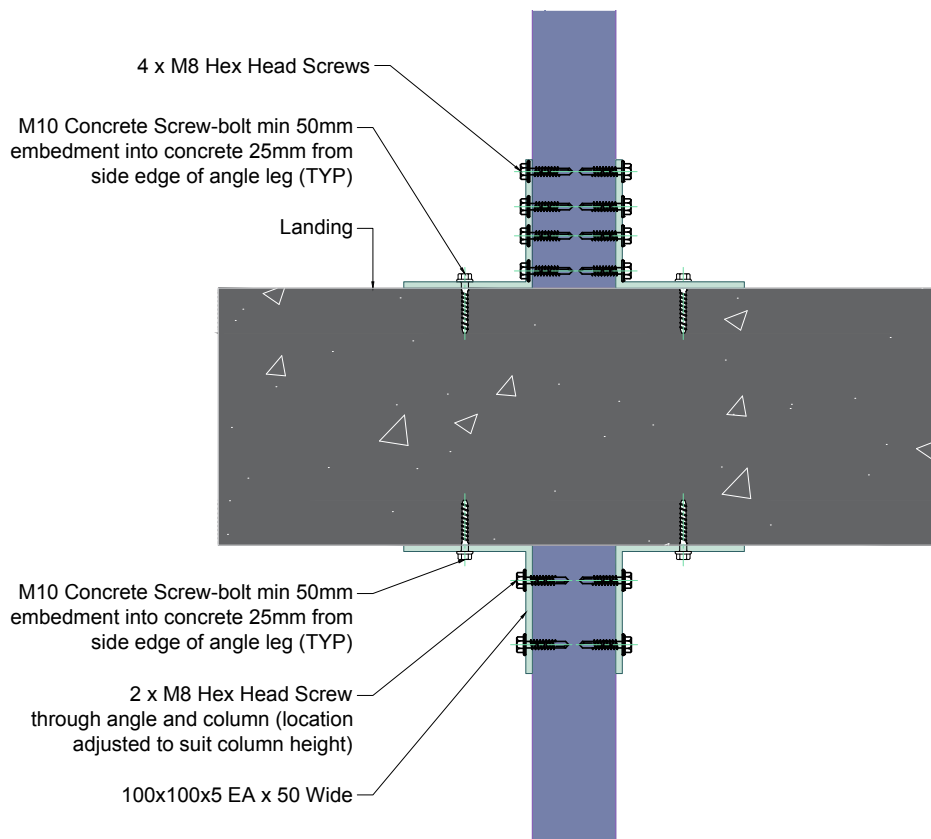
Option 2



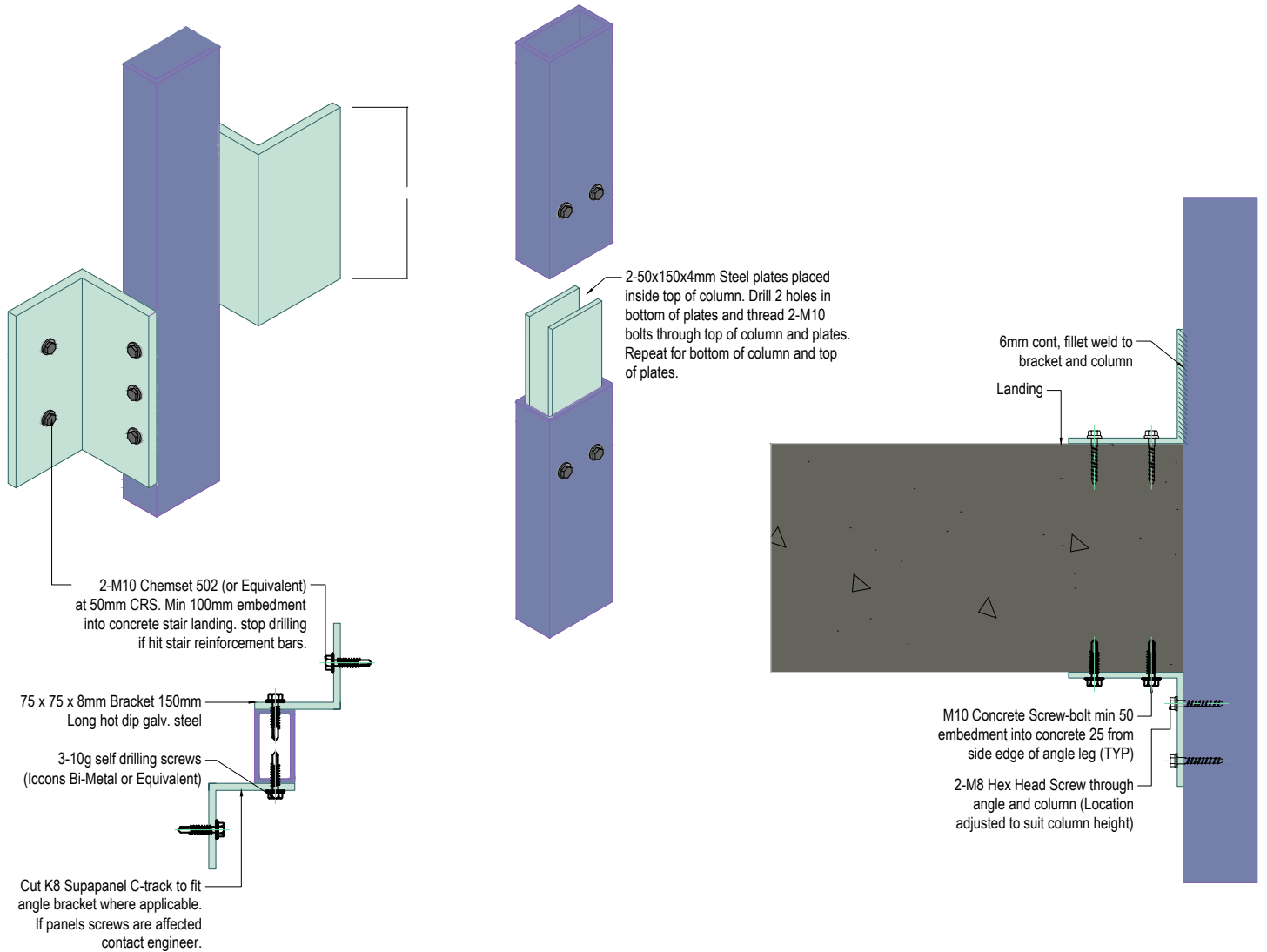
3.8 RECESS POST SUSPENDED ON LANDINGS



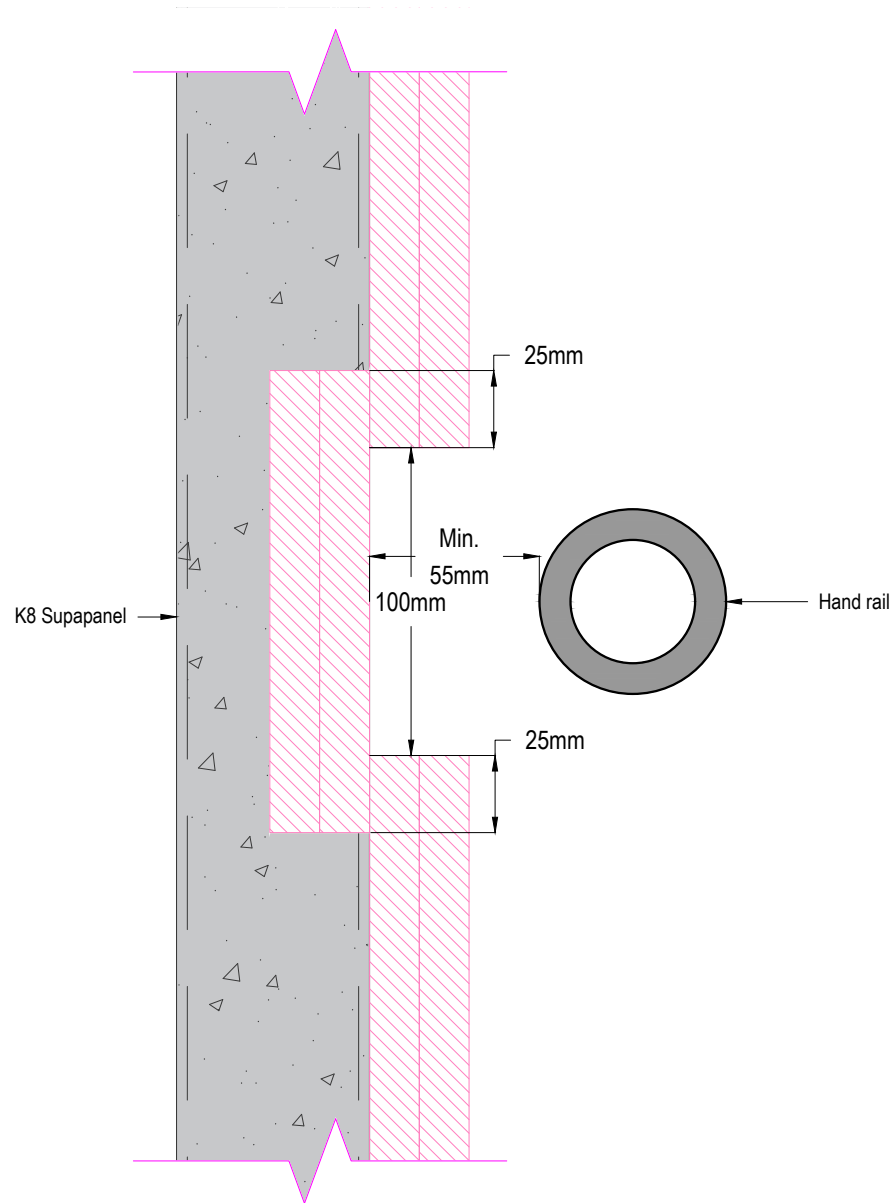
3.9 POST ON CROSS OVER LANDINGS



4.0 MID SECTION POSTS RUNNING POST STAIR RISERS



4.1 VARIATION FOR POST HANDRAIL FITTING



This is to be used when there is insufficient room for fitting the handrail by the landing intersection.