

K8 Supapanel® - CAD Samples

For full construction process please refer to our Installation Guide at www.k8australia.com.au prior including these drafts, please consult with our team or relative fire engineers to ensure full compliance

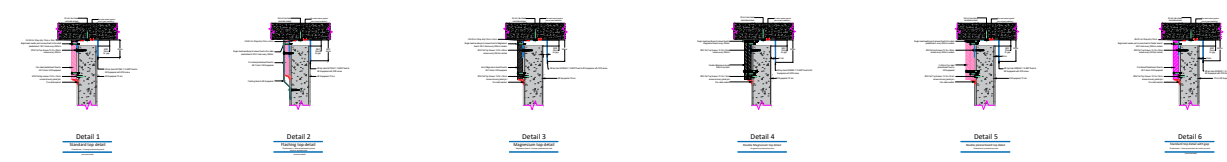
Specific project related details can be provided upon request.

Drawings are not to scale*

K8 Supapanel® general details

Top Details :

72mm -/120/120



62mm -/180/60 | -/180/90(corked joints)



Bottom Details :

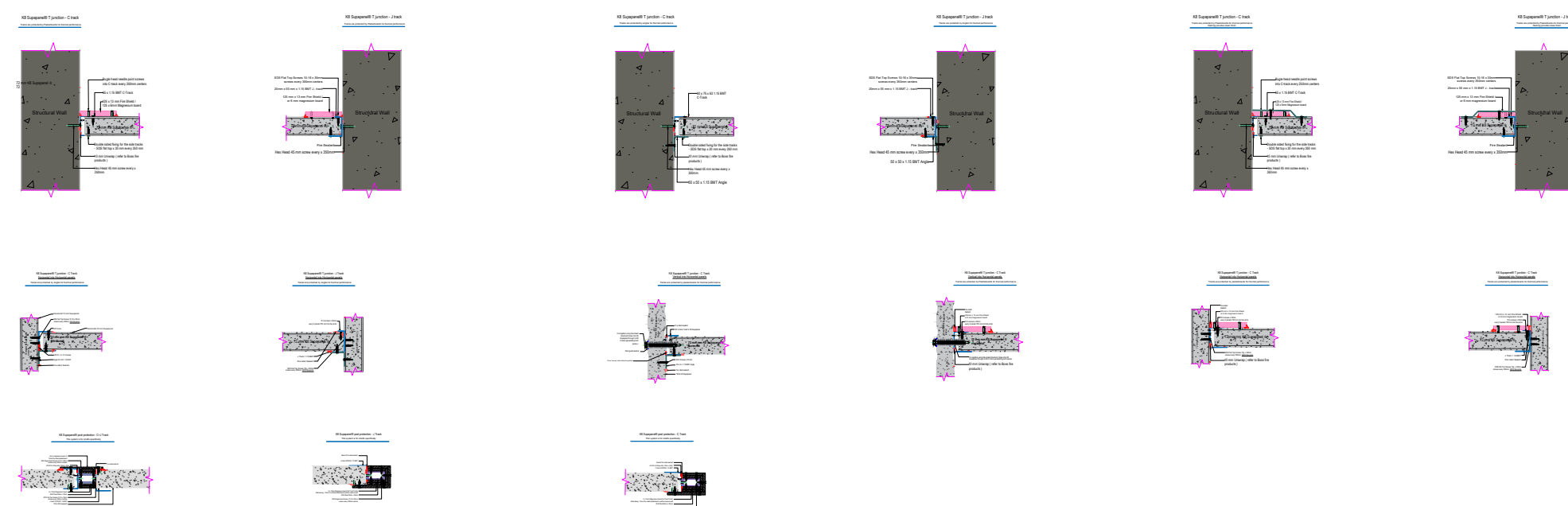
72mm -/120/120



62mm -/180/60 | -/180/90(corked joints)



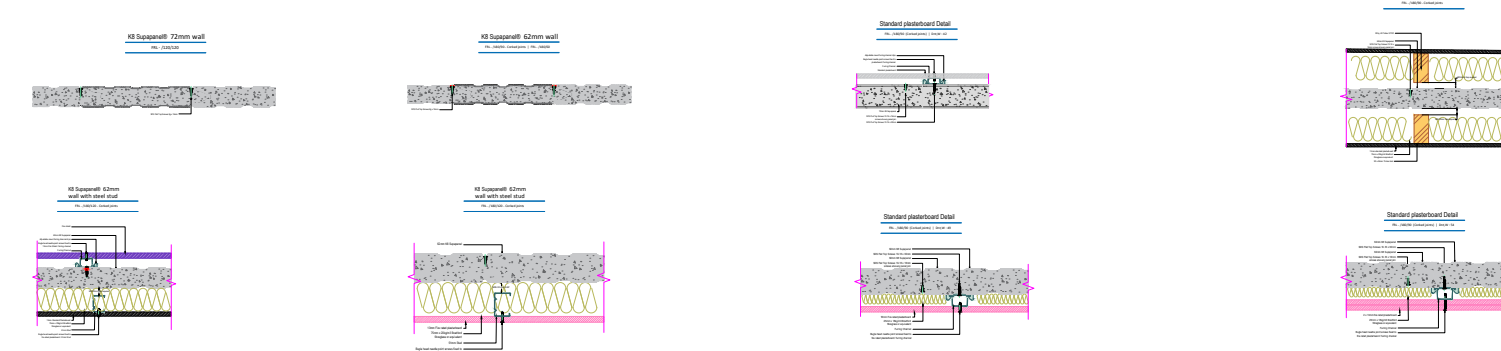
Side Details :



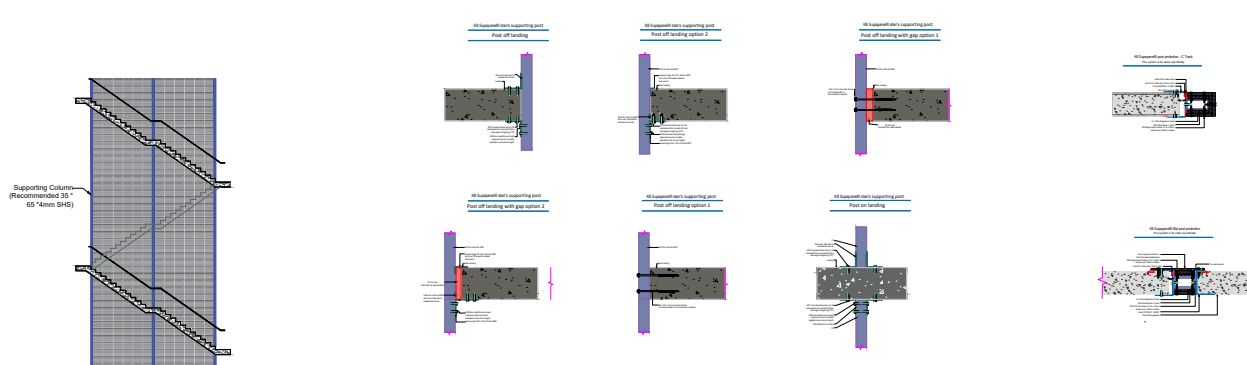
Corner/junction Details :



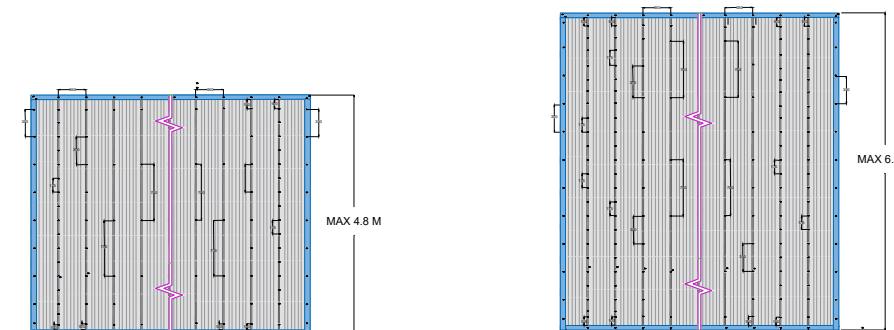
Walls :



Stair system :



Fixings details :



Fixings Orientation:
For walls higher than 4.5 M

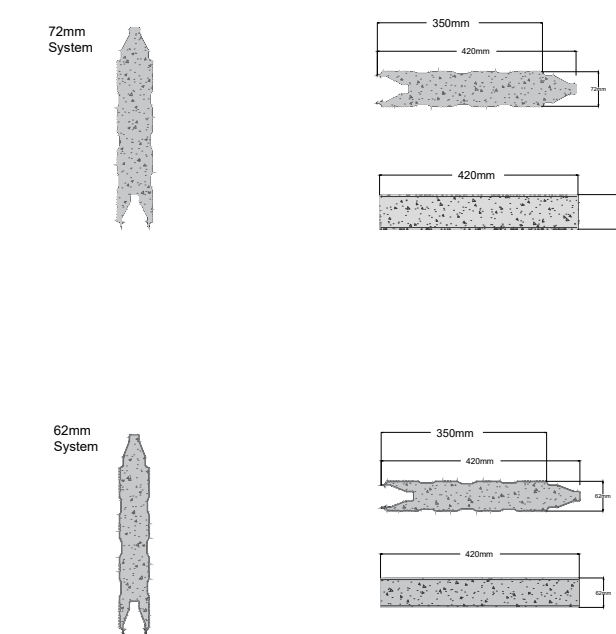
- 300 mm fixings required at the tracks
- 2 layers 150 mm fixings at the joints from each side
- 1 layer 300 mm fixings each side
- 100 mm fixings in the middle
- 100mm from the track to panels at top and bottom

Fixings Orientation:
For walls higher than 4.5 M

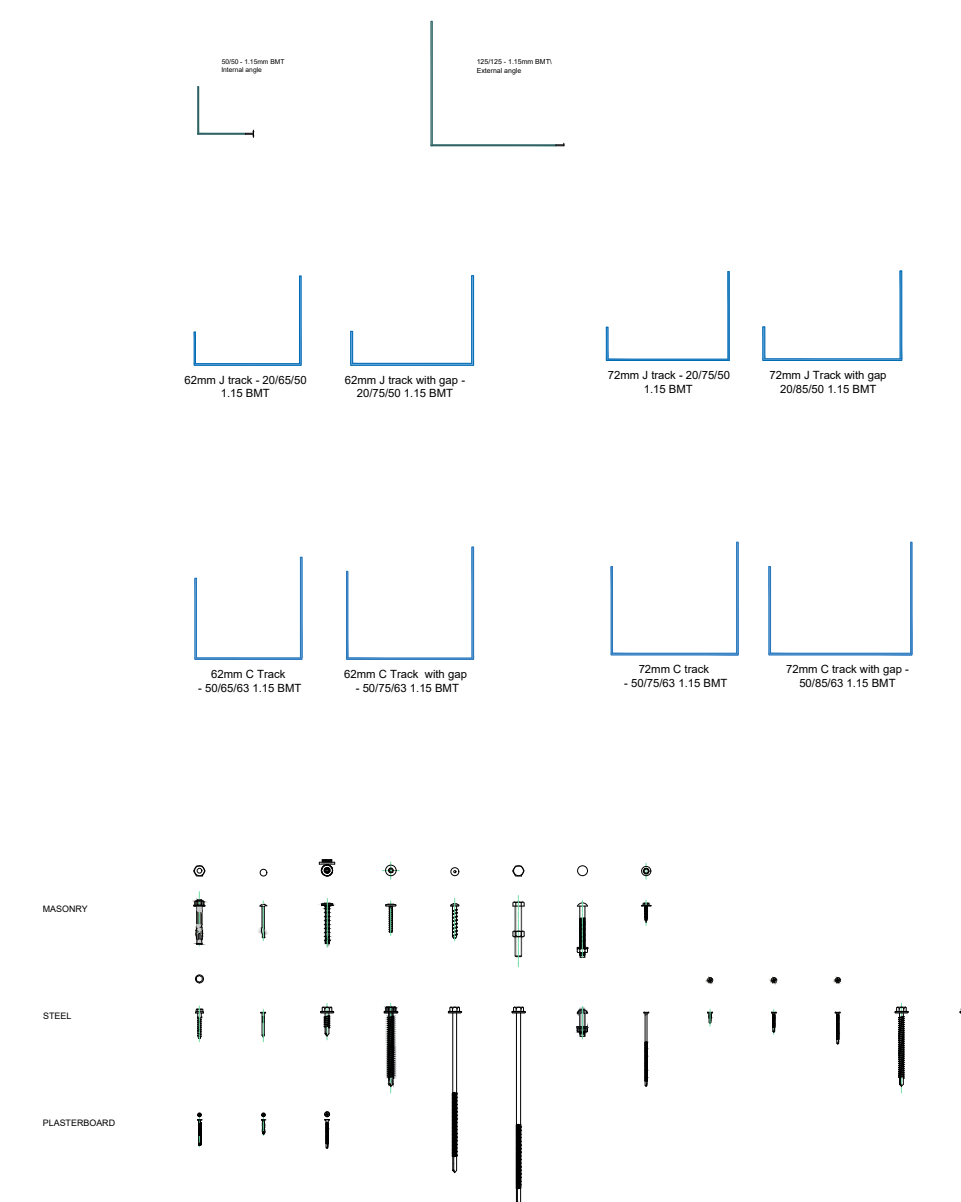
- 300 mm fixings required at the tracks
- 2 layers 150 mm fixings at the joints from each side
- 1 layer 300 mm fixings each side
- 100 mm fixings in the middle
- 100mm from the track to panels at top and bottom

K8 Supapanel® Components

K8 Supapanel® Panels :



K8 Supapanel® Tracks, Angles & Fixings :



General Notes

Included details:

- Top details
- Bottom details
- Side details
- Stair details
- Corner details
- Wall System
- Fixings details
- K8 Supapanel components

* drawings are not to scale *

REV:	Drawing Number:	Date:	By:
-	-	-	-
-	-	-	-
-	-	-	-
-	-	-	-
-	-	-	-
-	-	-	-
-	-	-	-
-	-	-	-
-	-	-	-
-	-	-	-

Project
K8 Supapanel Drafts - November 2022

Drawing Title

CAD Drafts

Drawing Number

Status: Approved

Drawing No: 01

Date: 2/11/2022

Scale: N/A

Rev No: 01

By: Sam Dizaji

Sheet: 1

